

# *Social Justice and Health Equity*

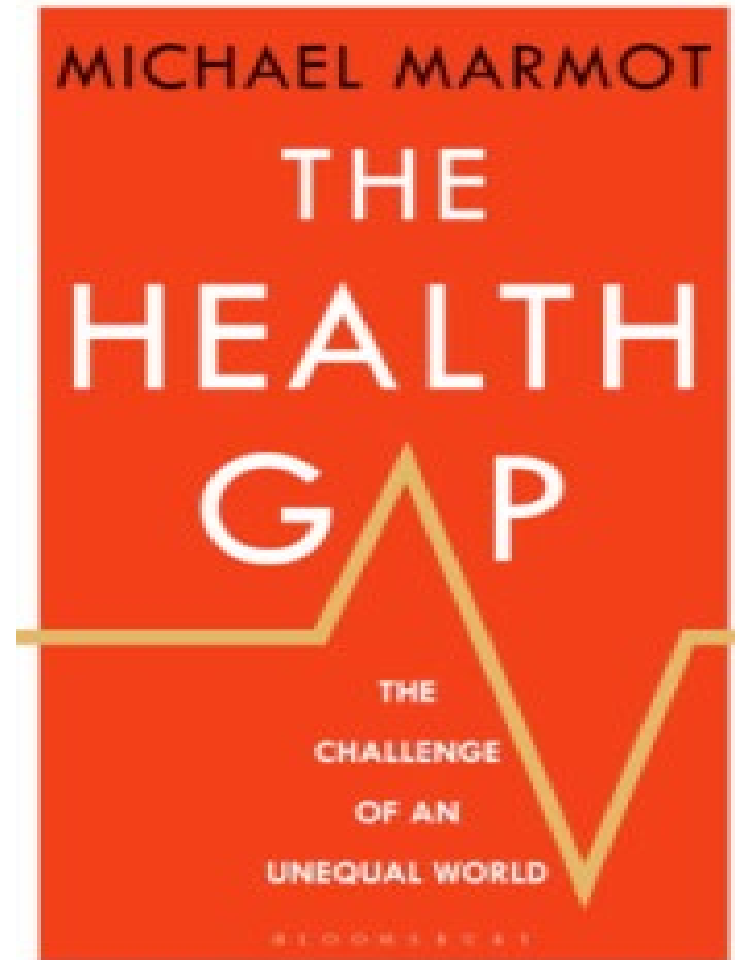
## *Marmot Places*

@MichaelMarmot

<http://www.instituteofhealthequity.org>

# Why treat people and send them back to the conditions that made them sick?

---




# Marmot Principles



1. Give every child the best start in life
2. Enable all children, young people and adults to maximise their capabilities and have control over their lives
3. Create fair employment and good work for all
4. Ensure healthy standard of living for all
5. Create and develop healthy and sustainable places and communities
6. Strengthen the role and impact of ill health prevention
7. Tackle racism, discrimination and their outcomes
8. Pursue environmental sustainability and health equity together

# The UK Context





**A decade+ of  
austerity**

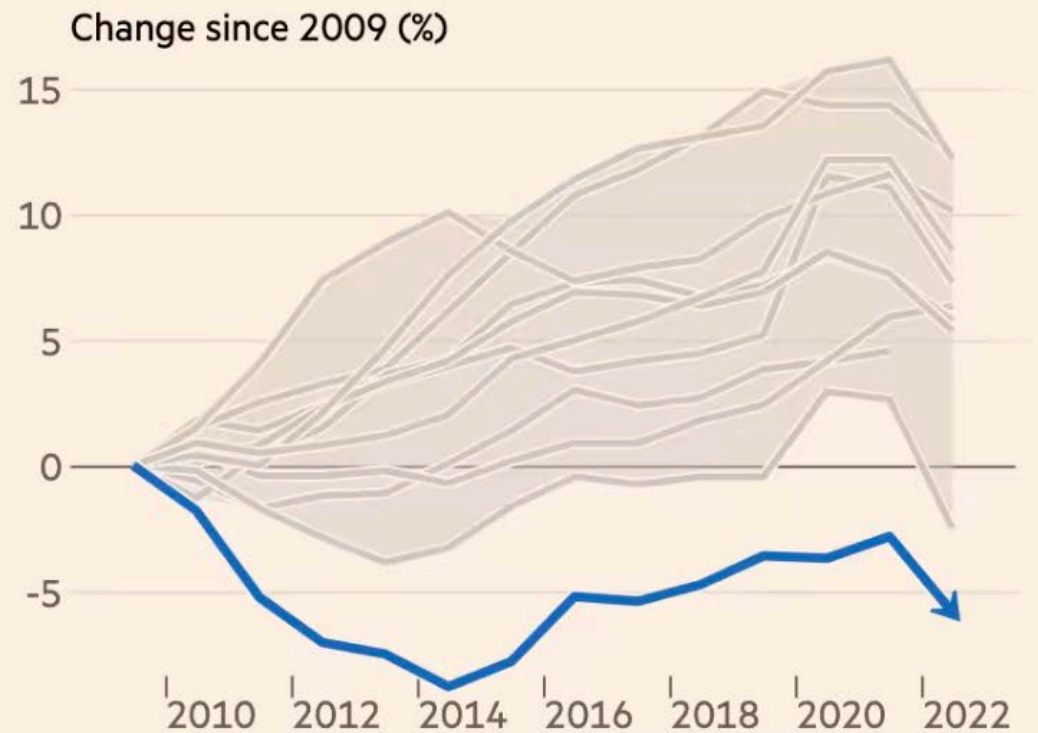
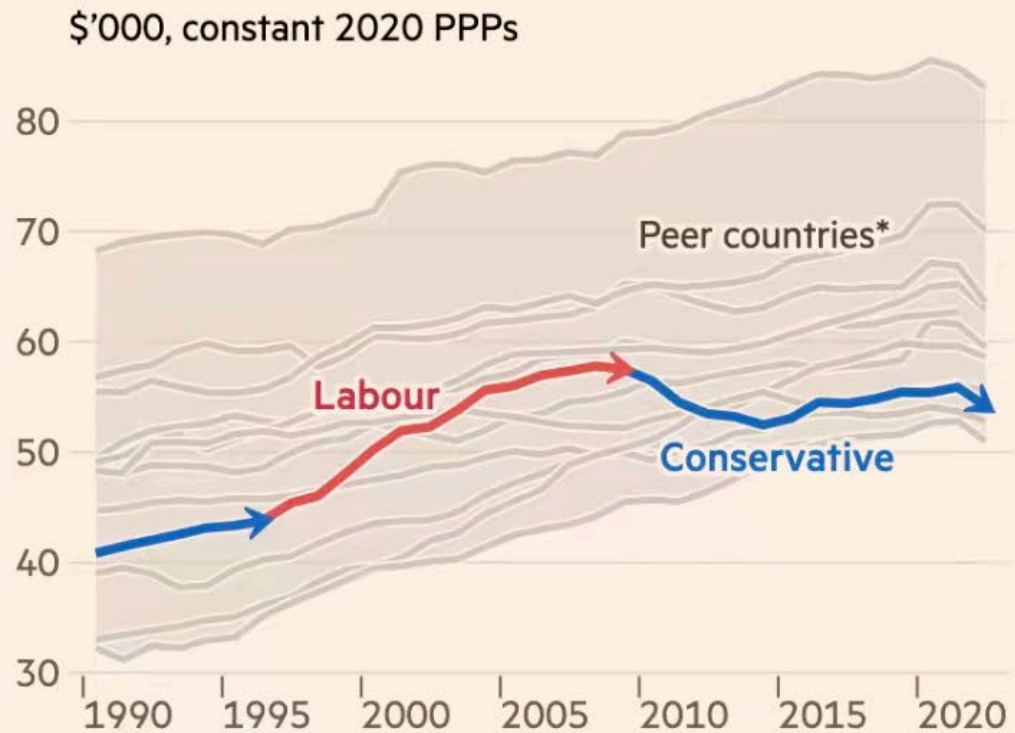
## George Osborne still defends the legacy of Austerity

---

- “There’s a simple truth, if you have a very large crash or economic crisis, the country pays the price...
- The basic truth... a country has to live within its means...
- The economic policies we pursued after 2010 meant that we actually had the strongest growth in the G7, more jobs were created... there’s a lot to be proud of. Britain in 2016 was buzzing... people were looking at the UK and saying that’s the example we want to follow.”

# UK real wages are lower today than 18 years ago, and have fared much worse than any peer nation

Evolution of real annual average wages



\*Austria, Canada, Denmark, Germany, Finland, France, Netherlands, Norway, Sweden, Switzerland, US

Sources: FT analysis of OECD, ILO, OBR

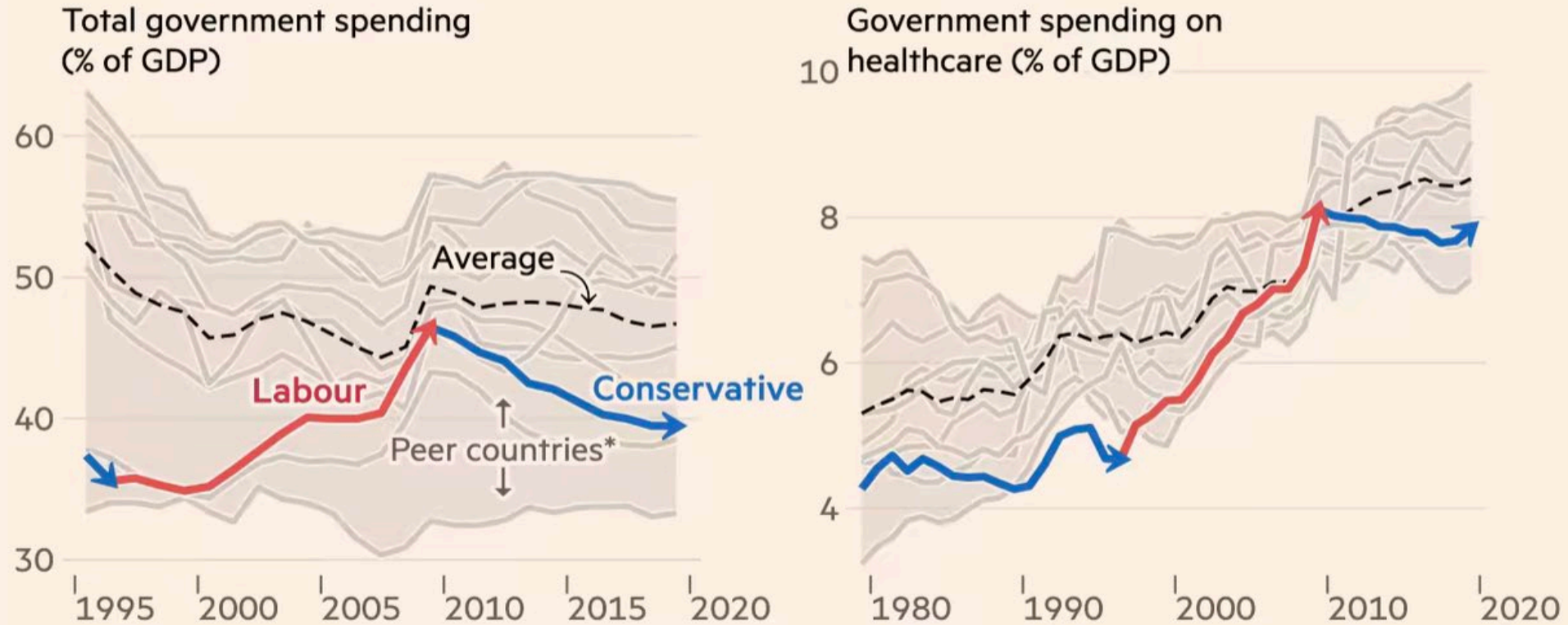
FT graphic: John Burn-Murdoch / @jburnmurdoch

© FT



# The Tories' austerity programme made deep and lasting cuts to public spending, especially investment, eroding Britain's state capacity

Evolution of government spending and investment in public services, UK (broken down by government)



\*Austria, Canada, Denmark, Germany, Finland, France, Netherlands, Norway, Sweden, Switzerland, US

Sources: FT analysis of OECD, OBR

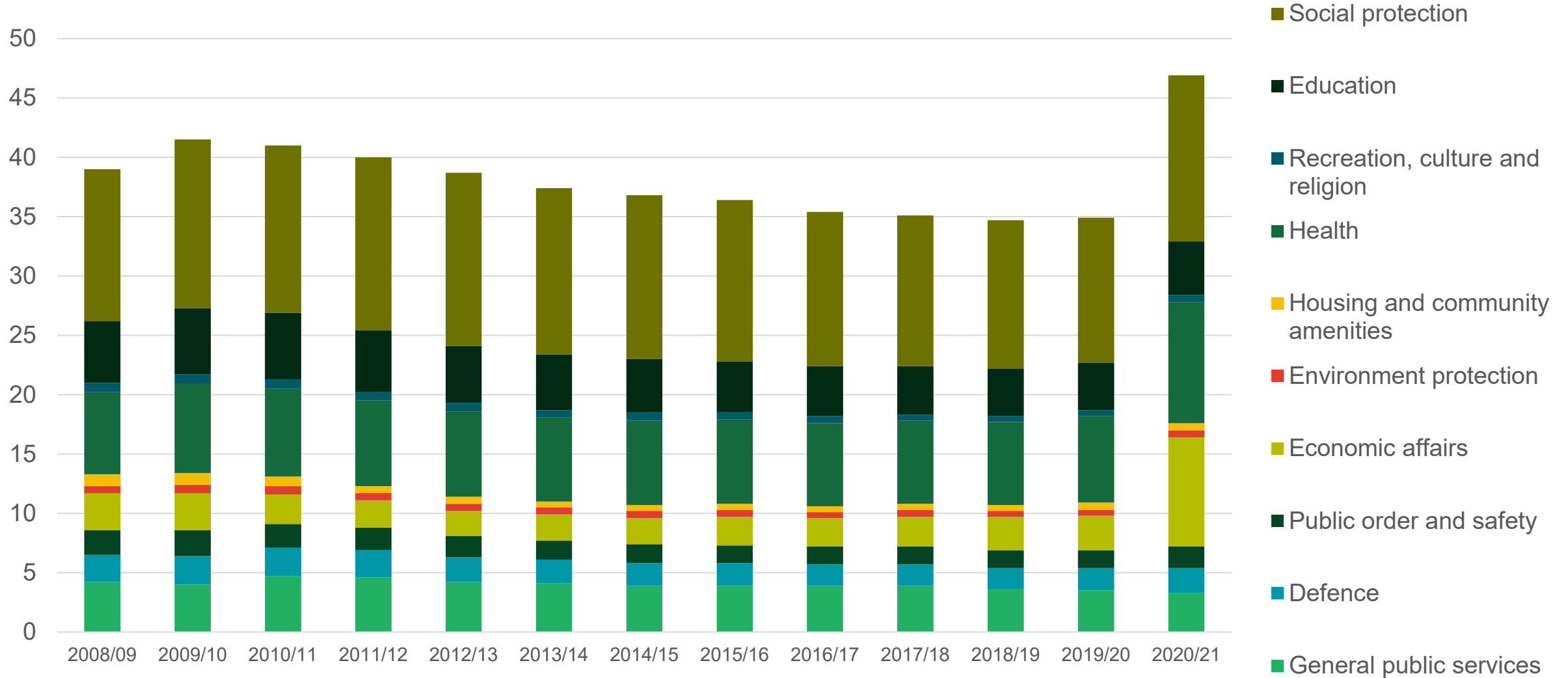
FT graphic: John Burn-Murdoch / @jburnmurdoch

© FT



# Public sector expenditure (% of GDP) declined in the UK

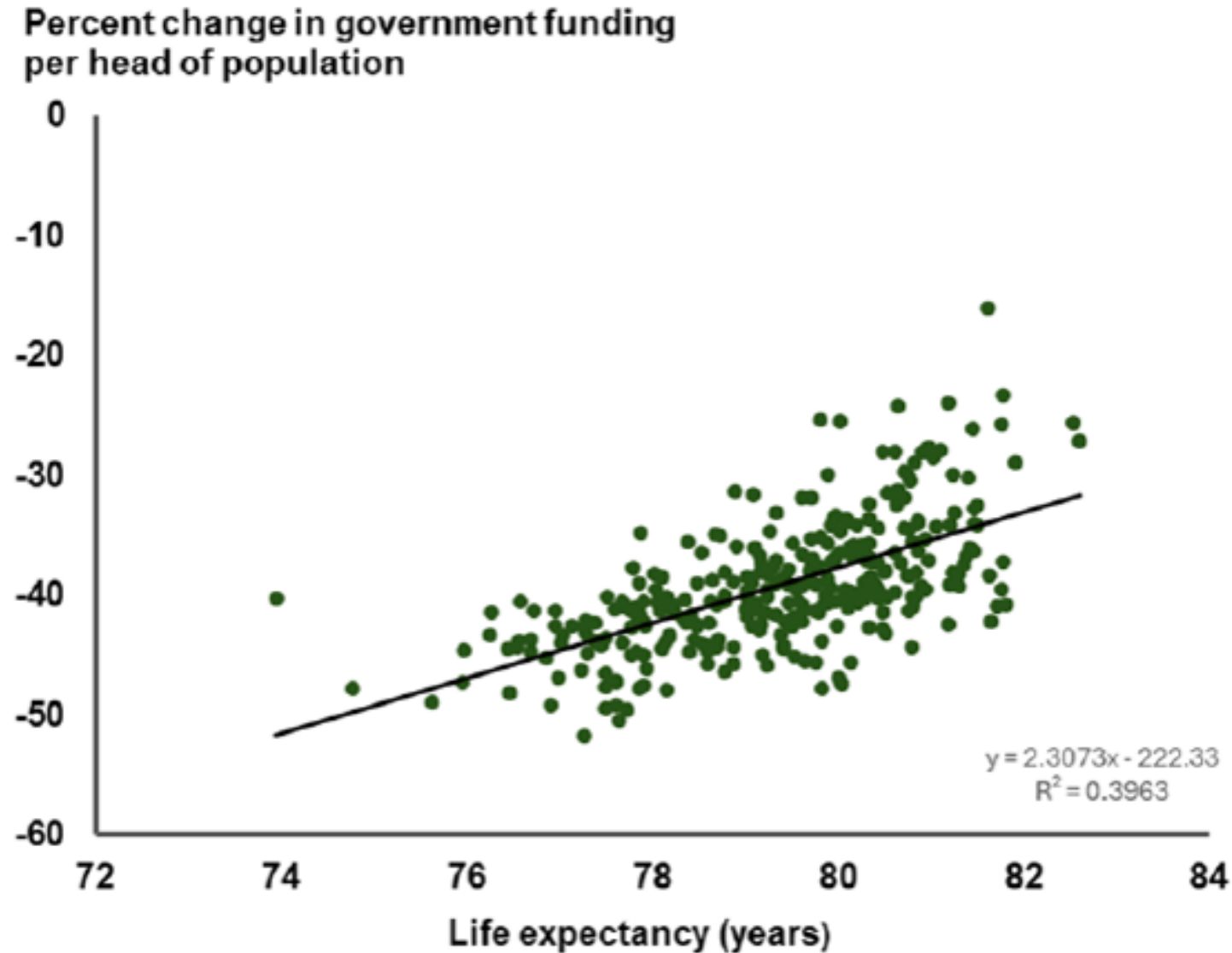
Percent



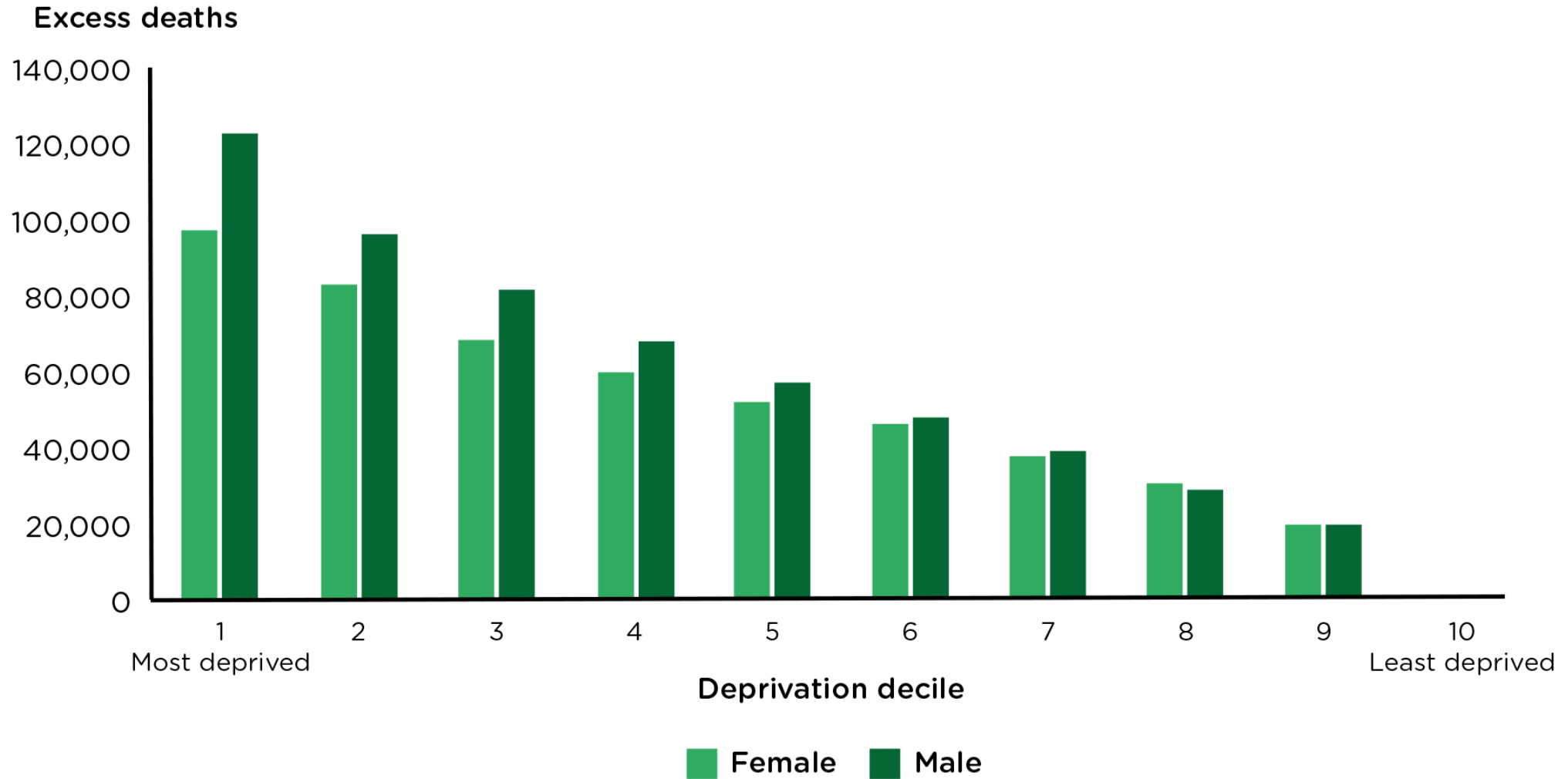


# Proportionate Universalism

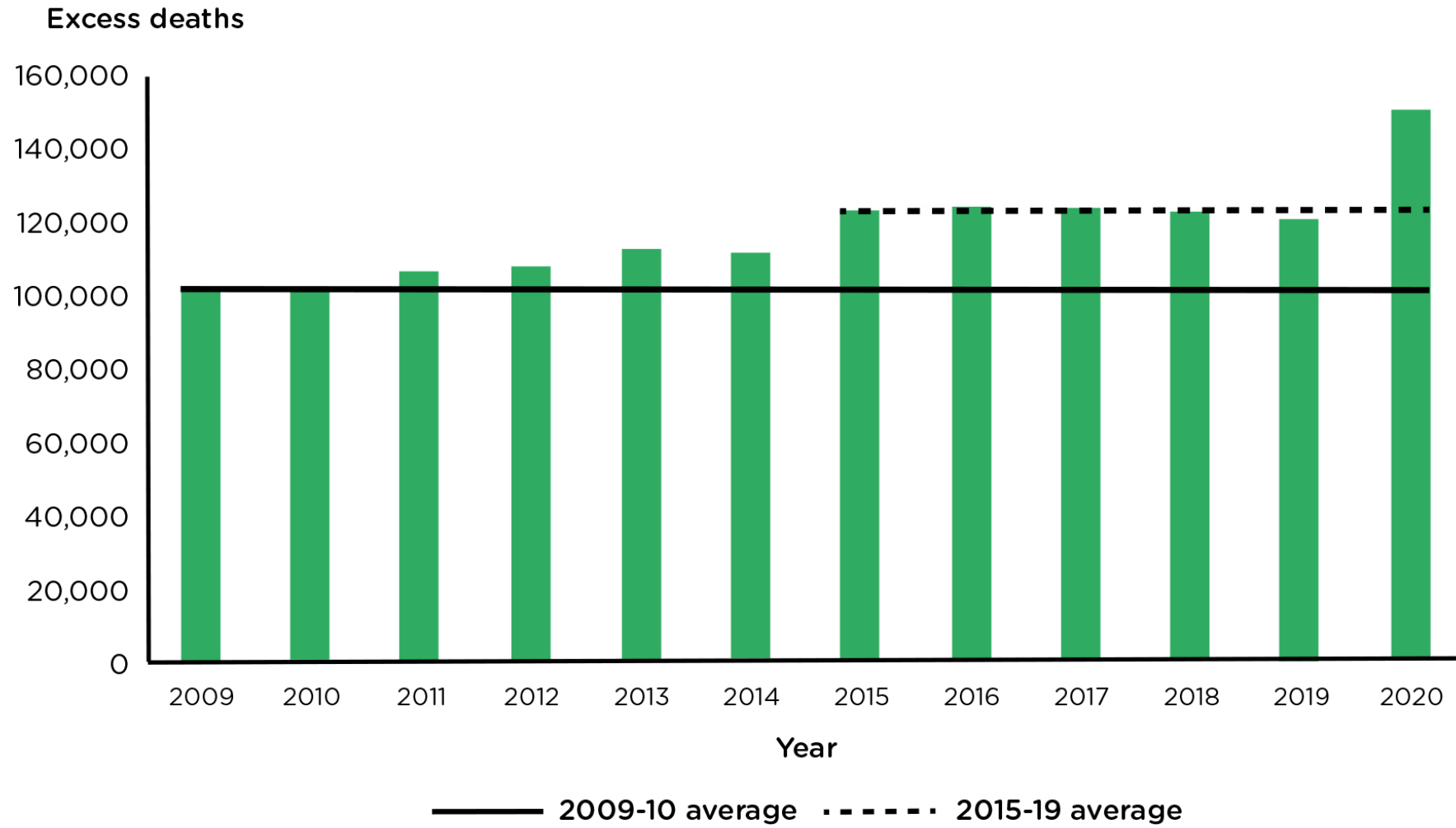
# Change in government funding per head of population by 2019/20 by male life expectancy in 2010-12, local authorities in England




# Excess deaths in each decile of area deprivations, based on the Index of Multiple Deprivation, by sex, England, 2011-2019



# Excess deaths in each year 2009 to 2020, based on area deprivation deciles using the Index of Multiple Deprivation

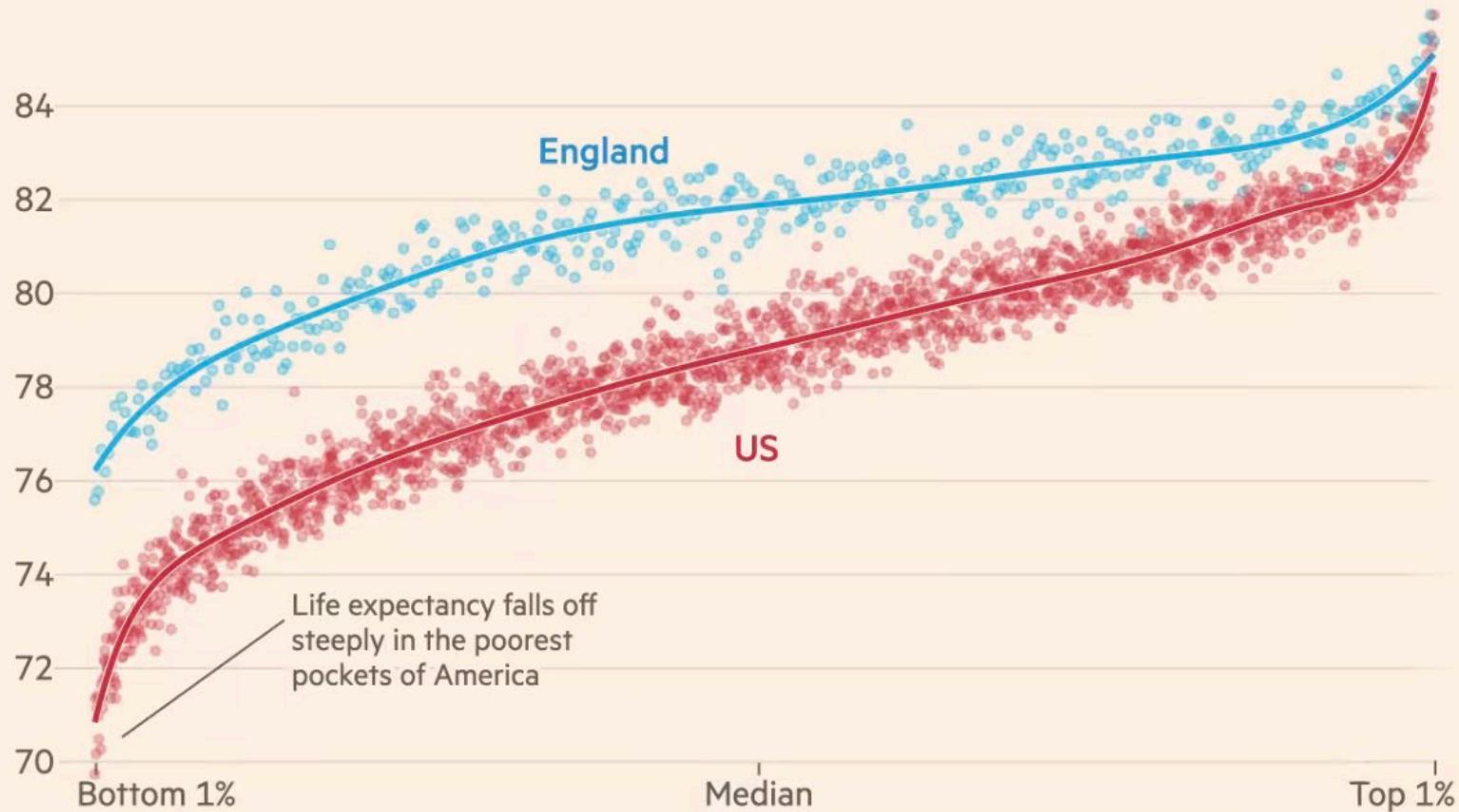


# The US Context



# Americans die earlier than the English across the income distribution, despite typically earning significantly more

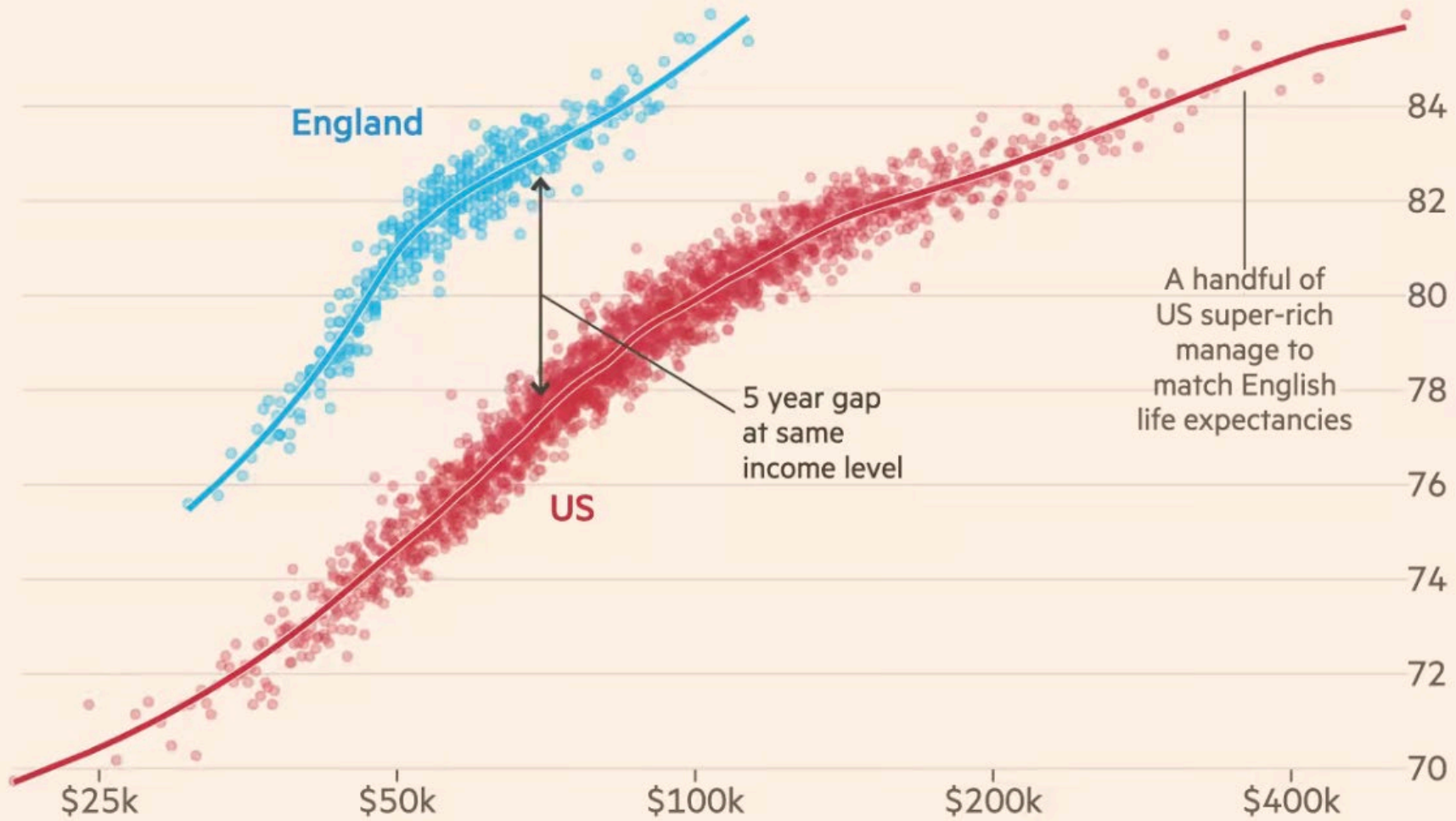
Life expectancy at different points along each country's income distribution\*



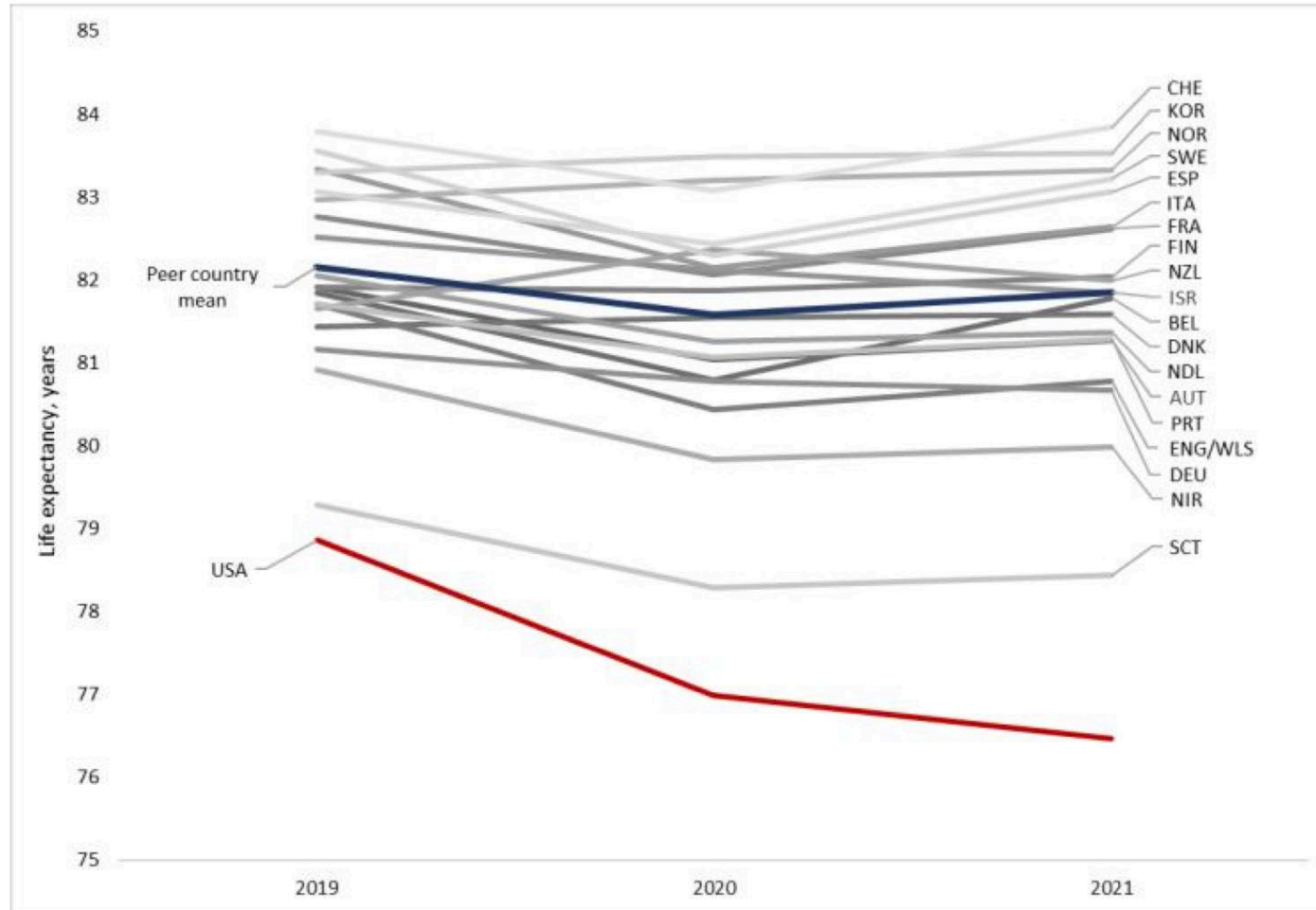
\*Each dot represents census tracts or Medium Super Output Areas containing roughly 100,000 people  
Sources: FT analysis of US Small-area Life Expectancy Estimates Project, Rashid et al. (2019), American Community Survey and ONS small area income estimates  
FT graphic by John Burn-Murdoch / @jburnmurdoch  
© FT



Life expectancy by net household income  
(2022 purchasing power parities)



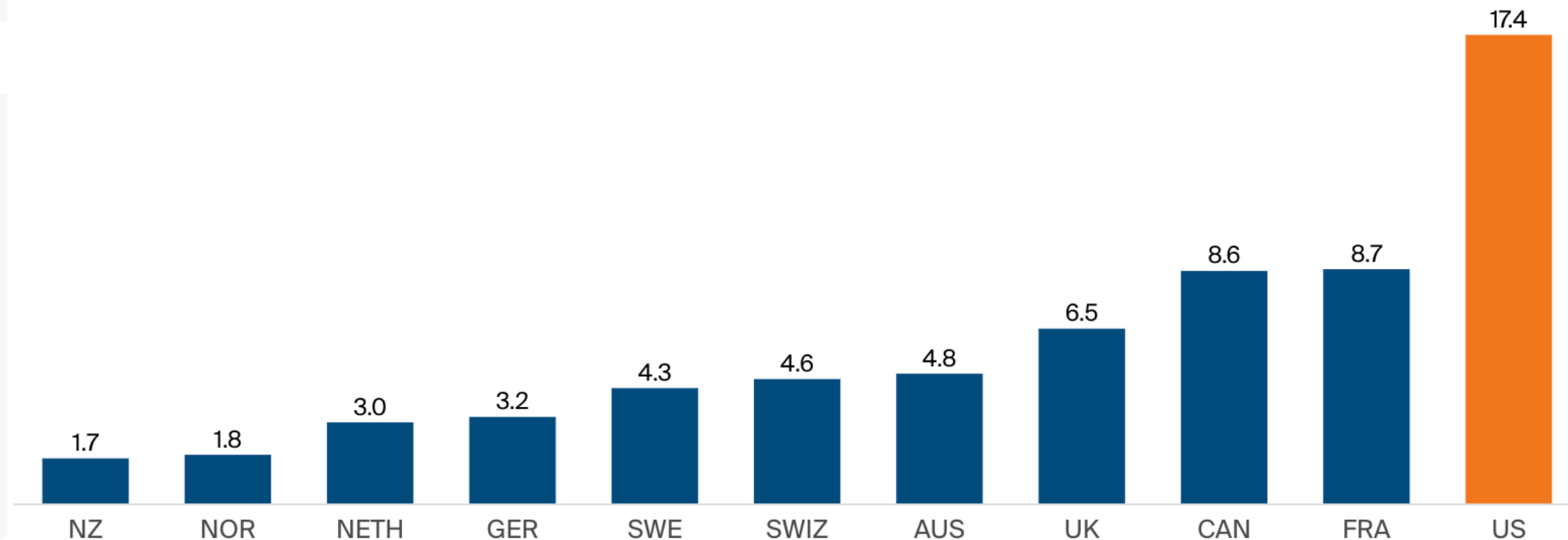
# Change in LE, 2019-21, US and 19 peer countries





# Maternal Mortality Ratios in Selected Countries, 2018 or Latest Year

Deaths per 100,000 live births

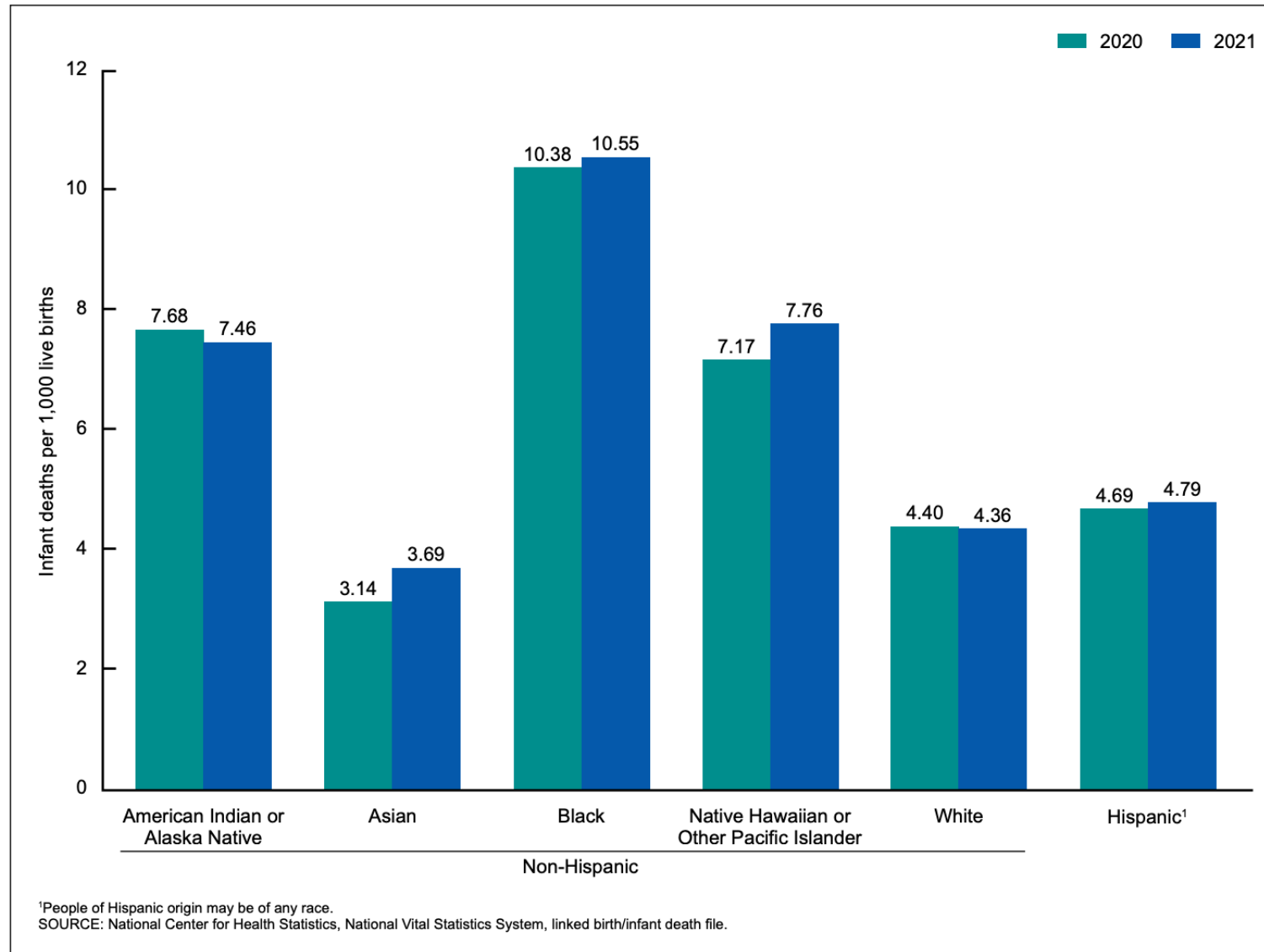


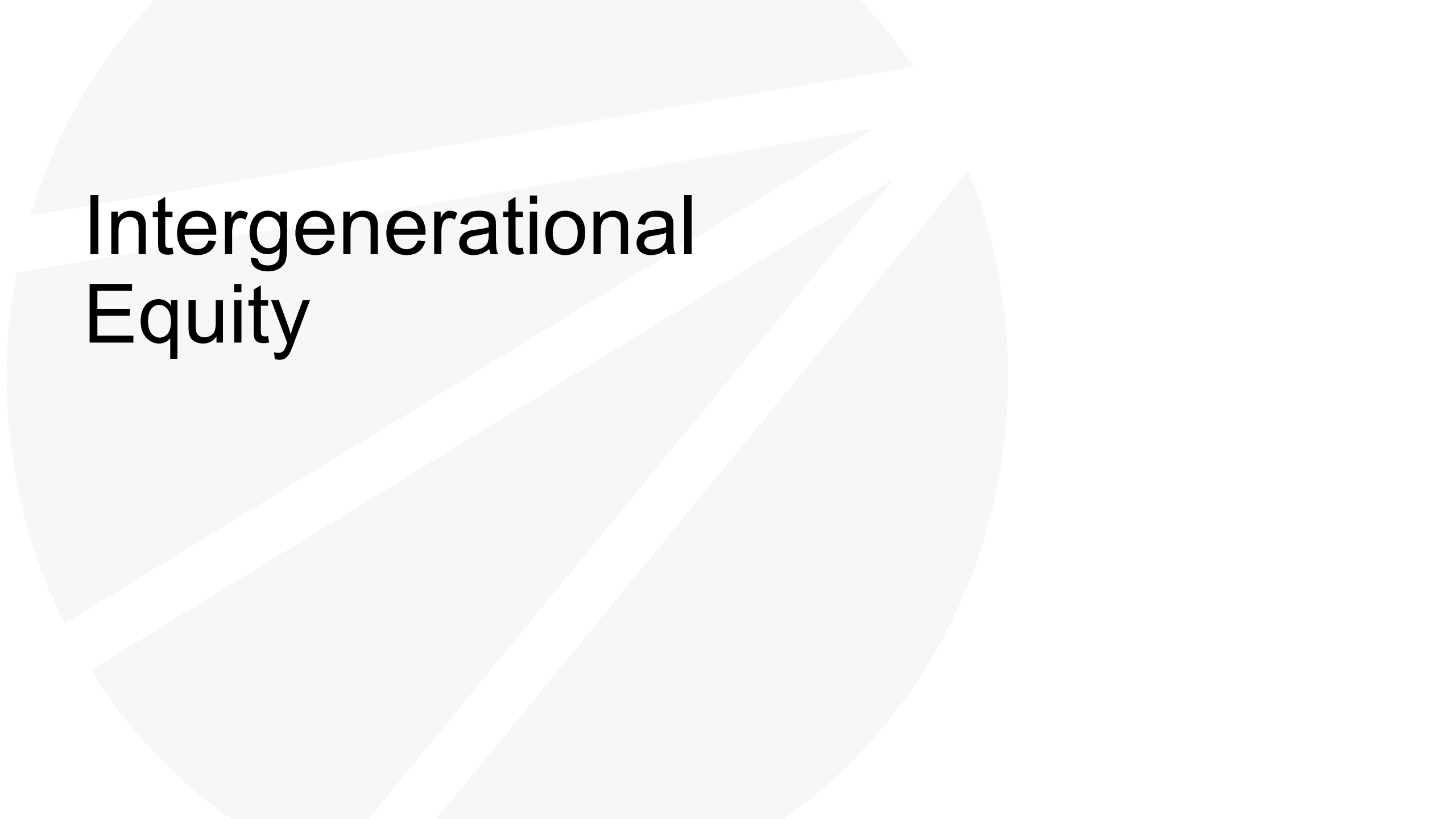
[Download data](#)

Notes: The maternal mortality ratio is defined by the World Health Organization as the death of a woman while pregnant or within 42 days of termination of pregnancy, irrespective of the duration and site of the pregnancy, from any cause related to or aggravated by the pregnancy or its management but not from accidental or incidental causes.

Data: OECD Health Data 2020, showing data for 2018 except 2017 for Switzerland and the UK; 2016 for New Zealand; 2012 for France.

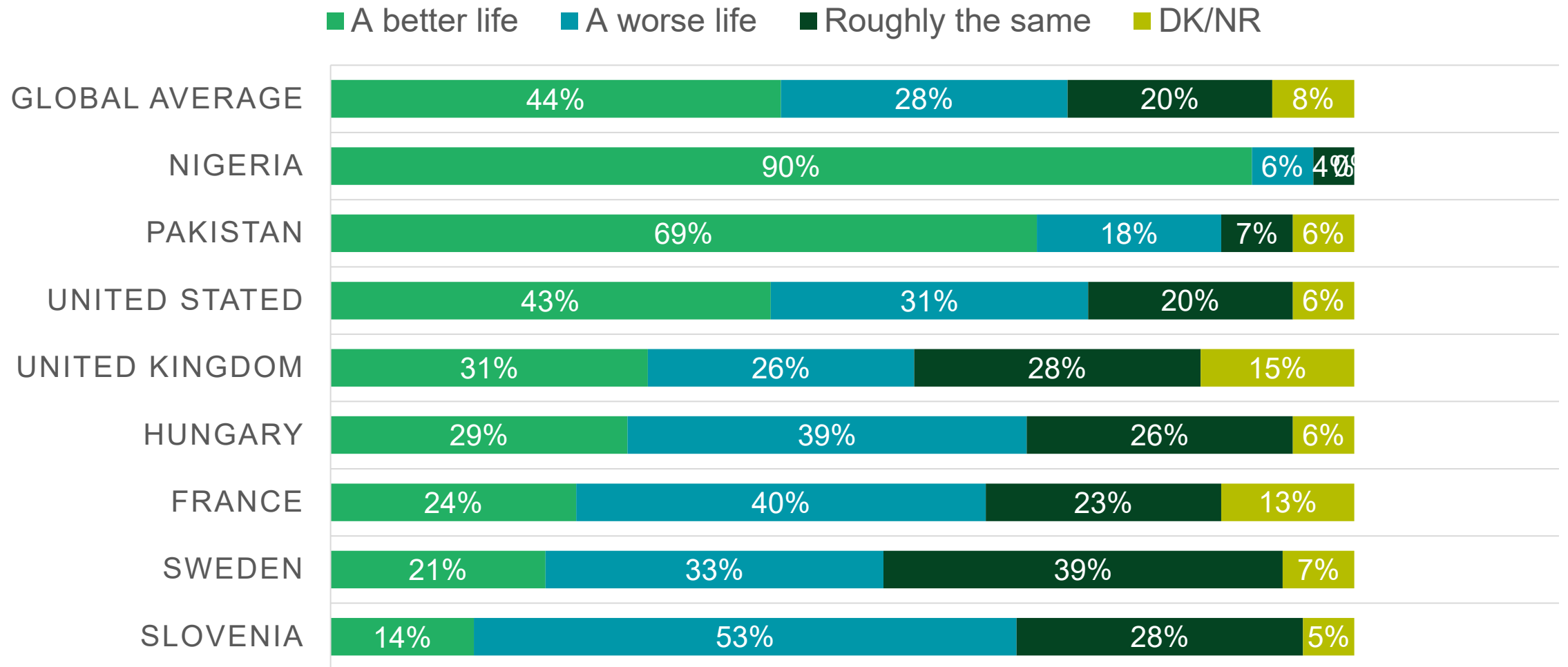
# Infant mortality rate, by maternal race and Hispanic origin: United States, 2020 and 2021





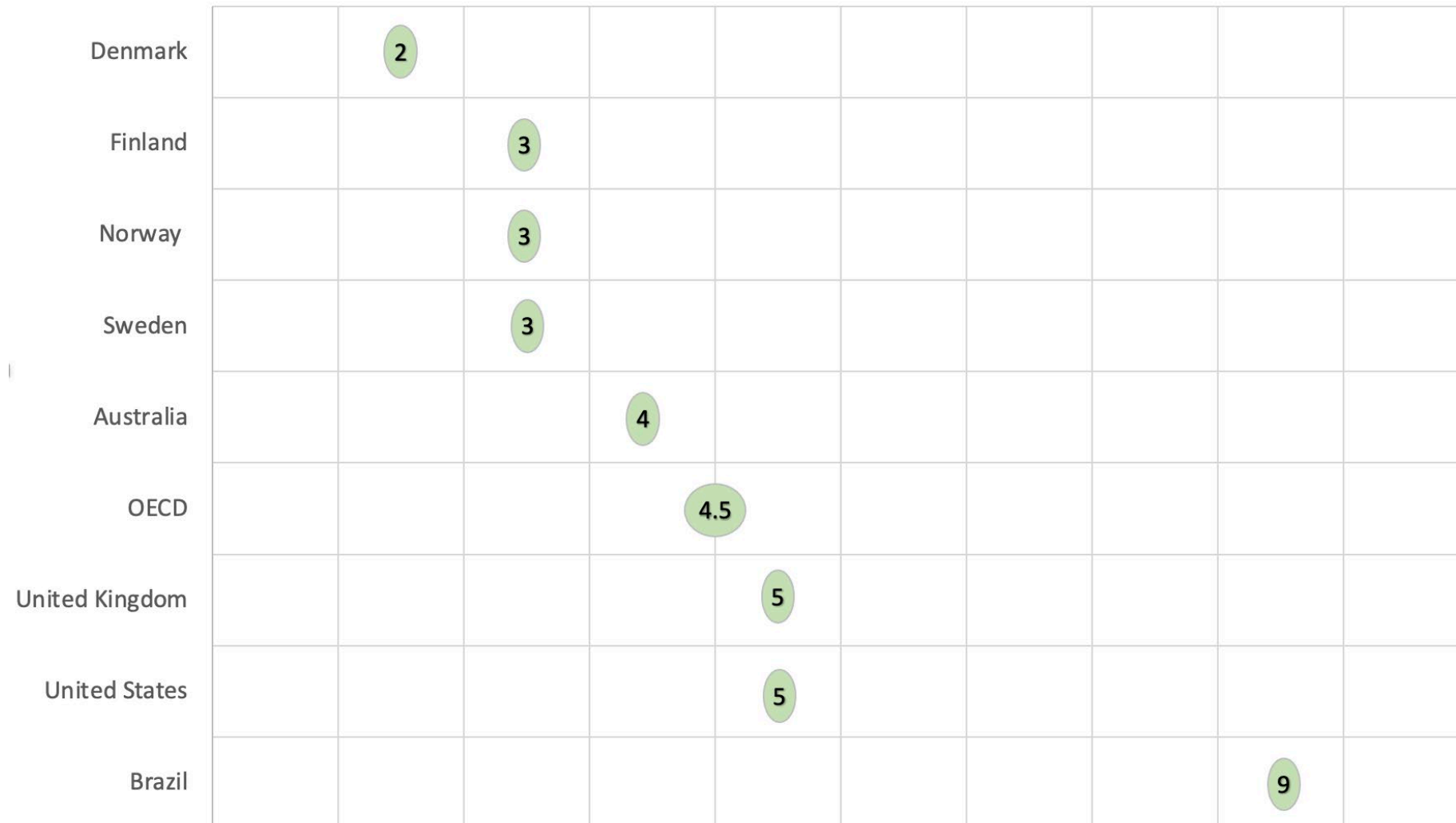
# Intergenerational Equity

# Do you think children today will have a better, worse or roughly the same life to you?

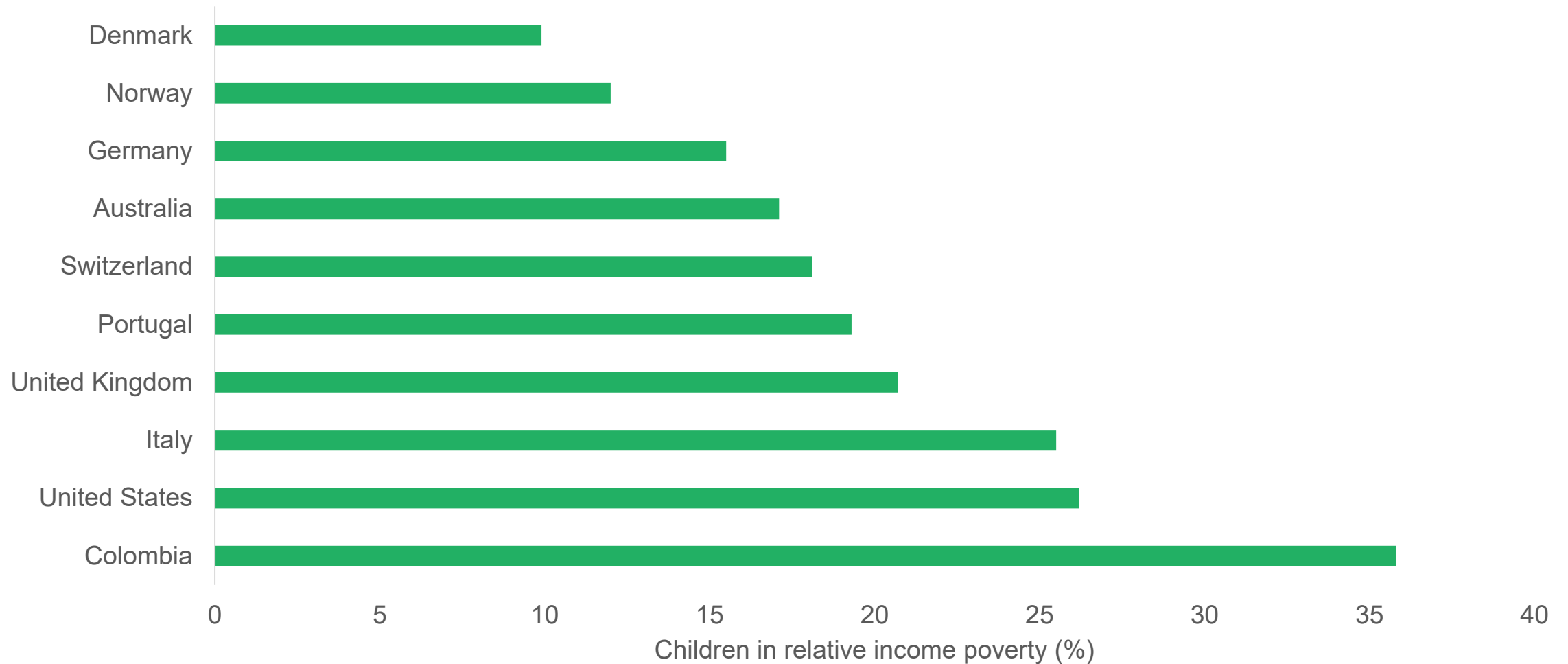




# Social mobility: How many generations does it take to go from low income to middle income in different countries



# Child poverty rates 2019-2021





**Local Action**

## Marmot Places – 40+ local authorities

---

- Coventry
- Greater Manchester
- Cheshire and Merseyside
- Lancashire and Cumbria
- Luton
- Waltham Forest
- Gwent
- Southwest region
- Leeds

### 2024 /25

- Medway
- Wokingham
- Northumberland
- West Norfolk
- Kent (tbc)
- Oxford (tbc)
- Westminster (tbc)
- Newcastle (tbc)



# COVENTRY – A MARMOT CITY

An evaluation of a city-wide approach to reducing health inequalities



INSTITUTE of HEALTH EQUITY

**ALL TOGETHER FAIRER:**  
HEALTH EQUITY AND THE SOCIAL DETERMINANTS OF HEALTH IN CHESHIRE AND MERSEYSIDE



INSTITUTE of HEALTH EQUITY



**REDUCING HEALTH INEQUALITIES IN LUTON:**  
A MARMOT TOWN

INSTITUTE of HEALTH EQUITY



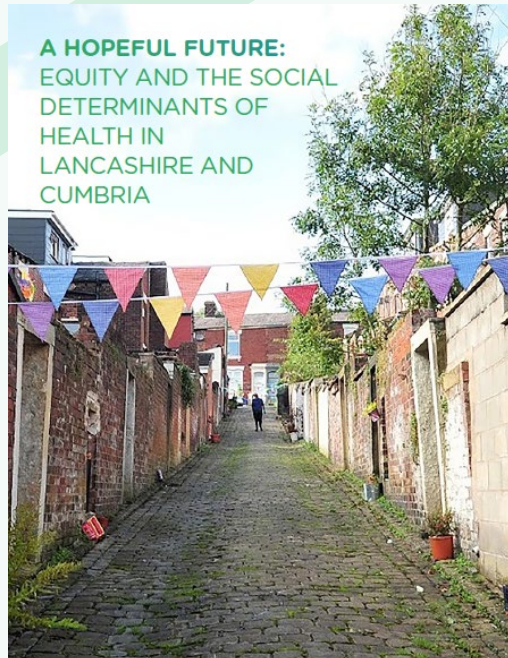
**FAIRER, HEALTHIER LEEDS:**  
REDUCING HEALTH INEQUALITIES

INSTITUTE of HEALTH EQUITY



**BUILD BACK FAIRER IN GREATER MANCHESTER:**  
HEALTH EQUITY AND DIGNIFIED LIVES

**A HOPEFUL FUTURE:**  
EQUITY AND THE SOCIAL DETERMINANTS OF HEALTH IN LANCASHIRE AND CUMBRIA



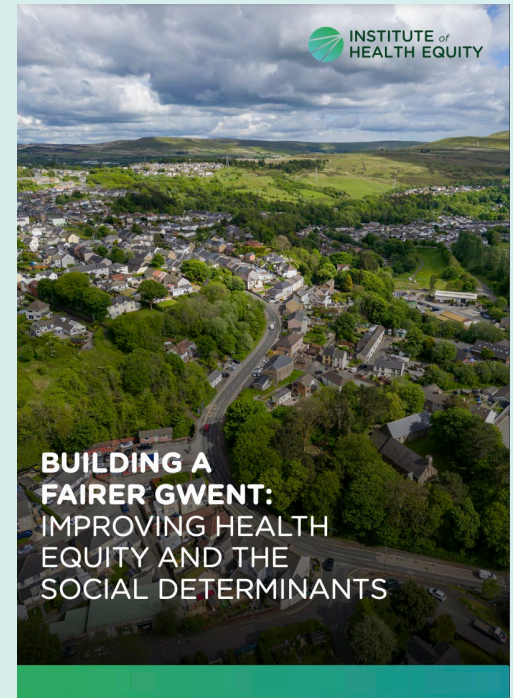
INSTITUTE of HEALTH EQUITY

INSTITUTE of HEALTH EQUITY



**A FAIRER AND HEALTHIER WALTHAM FOREST:**  
EQUITY AND THE SOCIAL DETERMINANTS IN WALTHAM FOREST

INSTITUTE of HEALTH EQUITY



**BUILDING A FAIRER GWENT:**  
IMPROVING HEALTH EQUITY AND THE SOCIAL DETERMINANTS

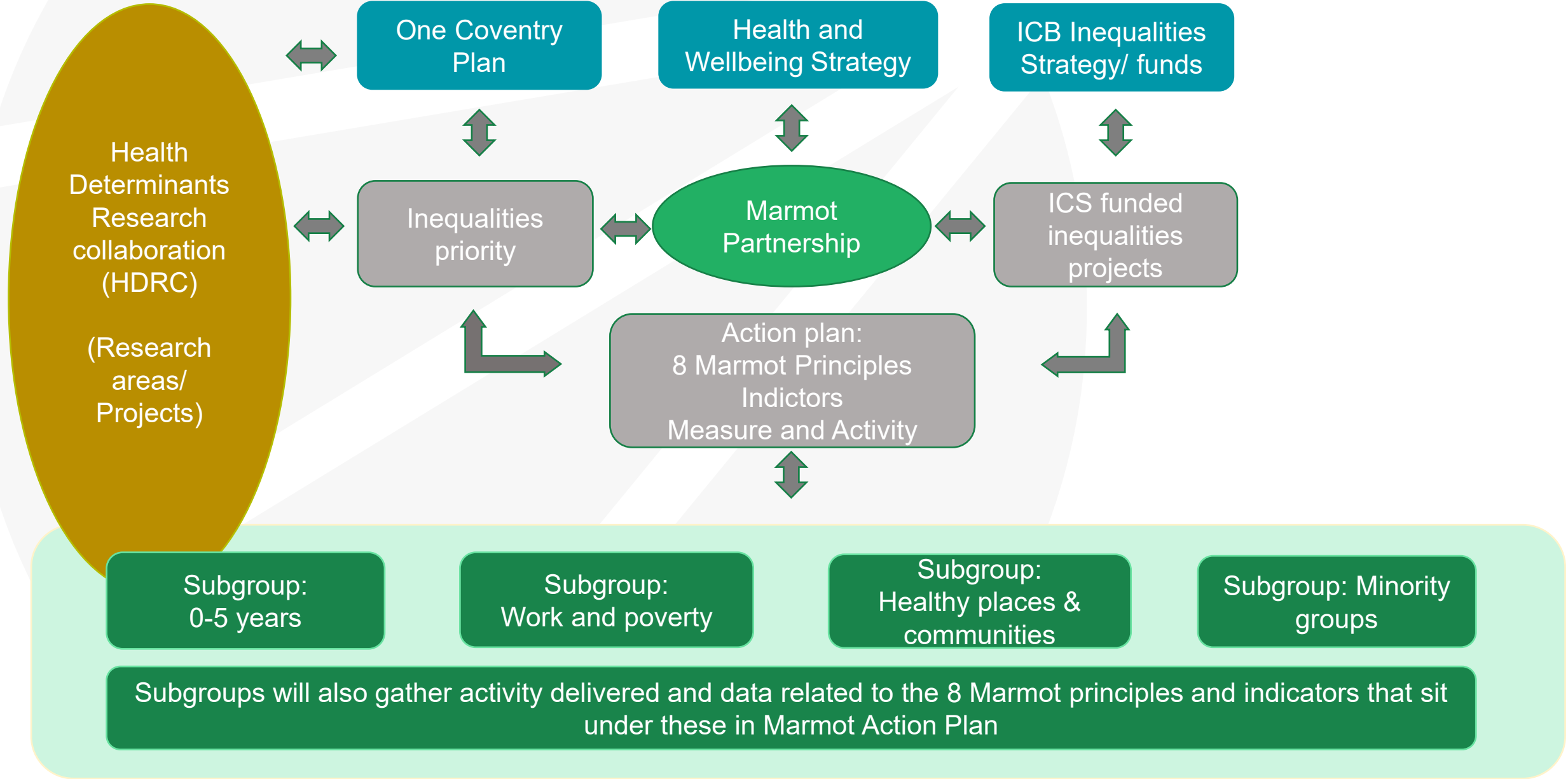


# Within places and nationally - sectoral action:

---

- **Local Government** – engine of change in places
- **Health Care** – moving to the causes of the causes of ill health
- **The VCS** – representing, delivering services and supporting
- **Public services** – education, CJS, transport
- **Business and the private sector** – employees, goods and services, social impact
- National government and national institutions

# Coventry current strategy (evolved)





Public Health,  
Education,  
Libraries & Adult  
Learning,  
Procurement,  
Economy and Jobs



# Coventry Marmot Steering Group Partnership working



# Coventry Job Shop: Helping people into employment

## COVENTRY: A MARMOT CITY

Some key achievements

### COVENTRY JOB SHOP

Operating since 2012, served 40,000 residents  
Youth unemployment reduced from 27% to 12.3%  
(above national average to below)  
Average weekly earnings increased from £45 less than  
national average to £17 less  
There are 16.5% more residents in work since 2014



### AMBITION COVENTRY



Employment support programme  
engaged with 1,700 young  
people at risk of not being in  
employment, education or  
training



# Liverpool 2040 – A Marmot City

---

- **Following the C&M *All Together Fairer* report in 2022 Liverpool have published their goals including:**
- **Embed a health equity approach in the way the Council makes decisions**
- **Work towards being a Marmot City by April 2025**



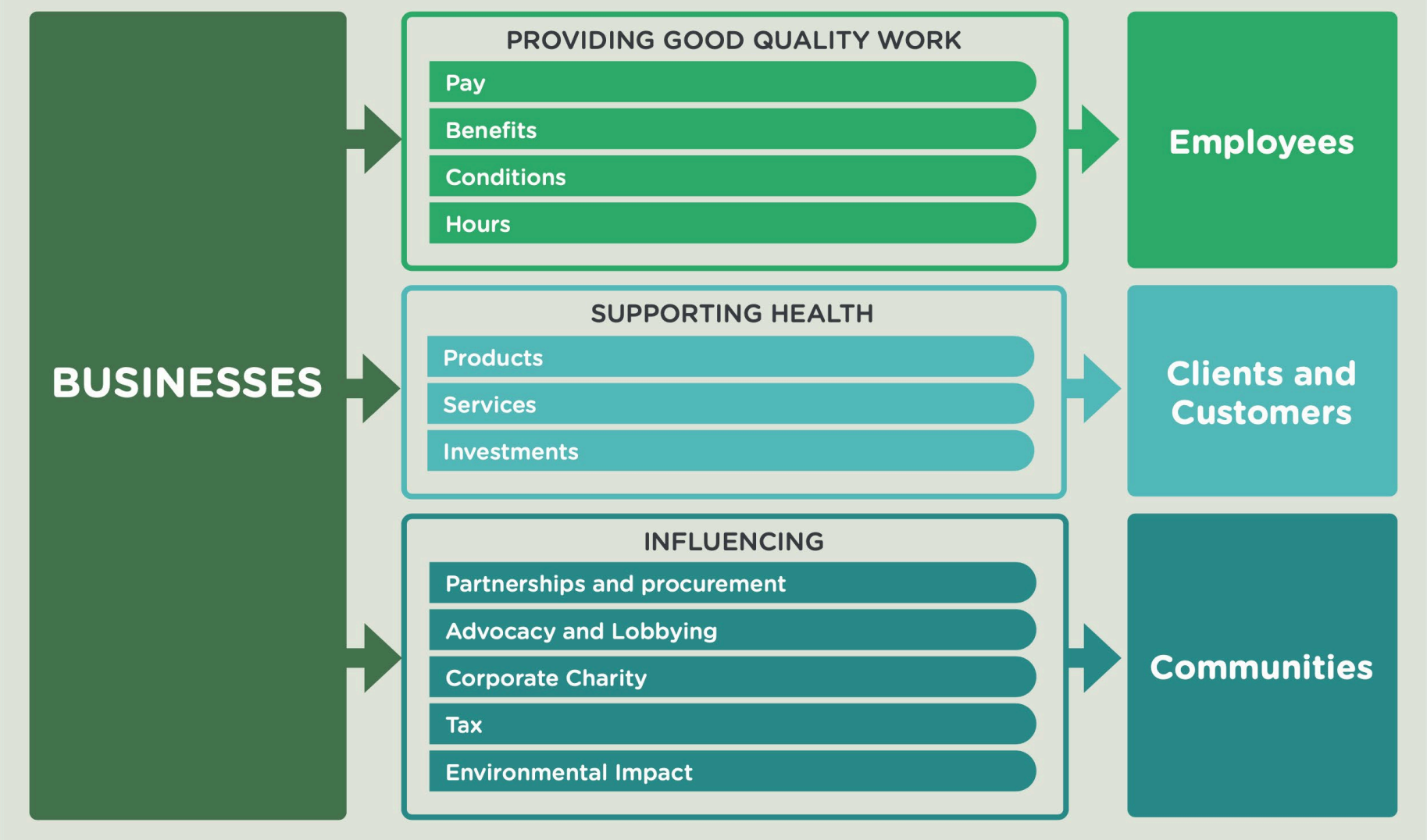




**THE BUSINESS OF HEALTH EQUITY:  
THE MARMOT REVIEW FOR  
INDUSTRY**

# Key partners: Businesses

# How businesses shape health: the IHE Framework

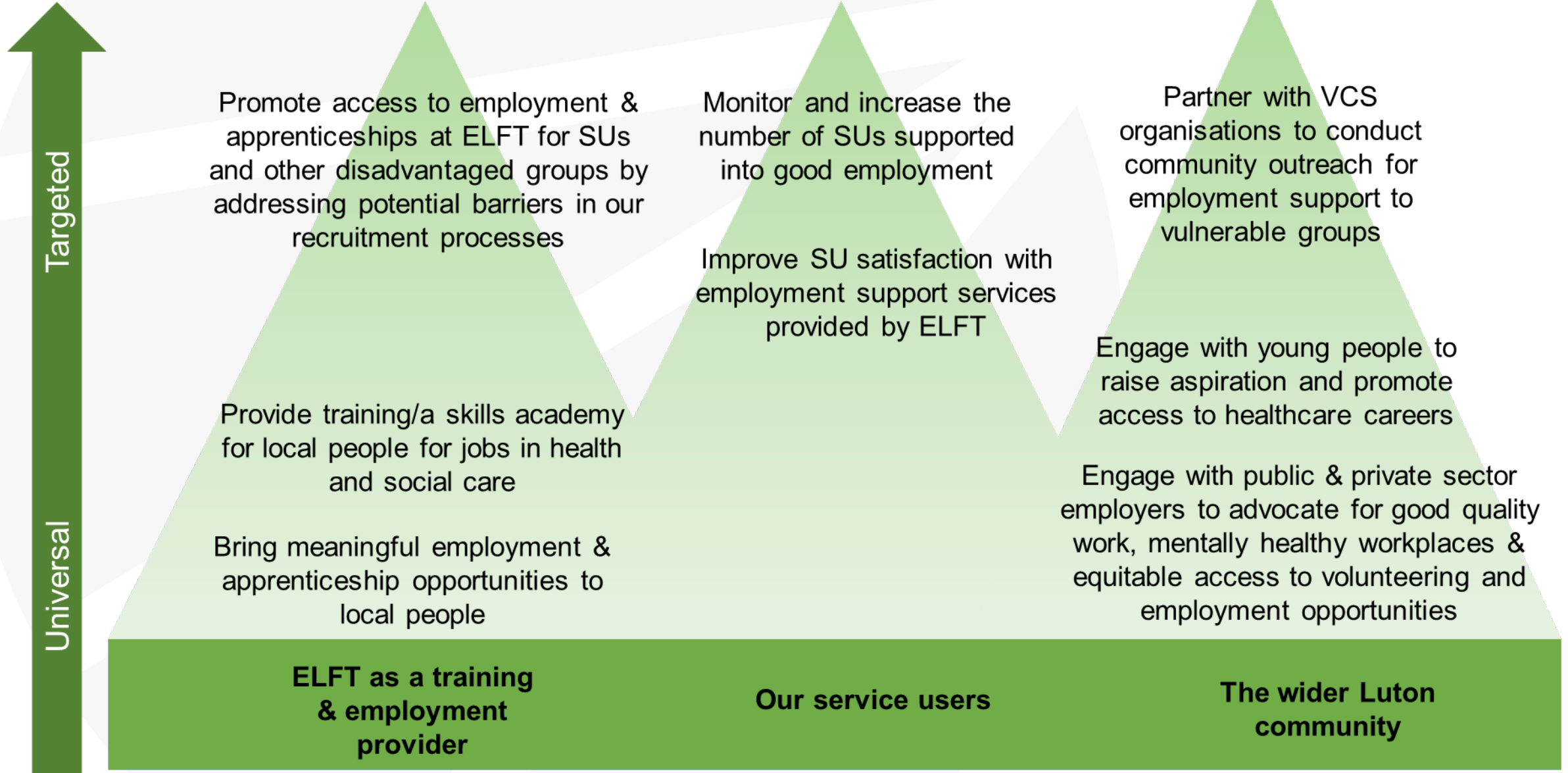


# Social justice *and* better business

---

- Healthier and more productive workforce.
- Staff retention
- Better recruitment
- Attracting consumers
- Attracting investors

# ELFT's Marmot Mountain: Potential actions in line with our vision



Establishing good working relationships with community partners & employers



# Optimistic or hopeful

---

“Hope is not prognostication. It is an orientation of the spirit ... an ability to work for something because it is good, not just because it stands a chance to succeed...”

Vaclav Havel